

ONWA[®]

MARINE ELECTRONICS

NEW!

MODEL

KFISH-12

12-inch Dual-frequency
Fish Finder

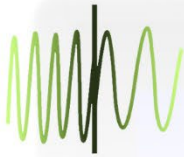
**UP TO
2KW
POWER**



NEW FEATURE!



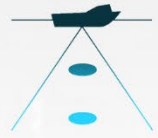
SEABED HARDNESS
Displayed



MULTIPLE DISPLAY
(Frequency)



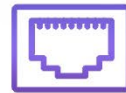
Auto Range & Gain



Time Variable Gain



Optional
HDMI FEATURE



Optional
USB AND ETHERNET PORT

**NMEA2000
NMEA0183**
NMEA Interface

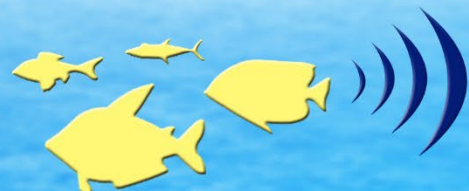
50 kHz and 200 kHz
Dual Frequency

1kW or 2kW
Transducer

FISH SIZE CALCULATOR



SONAR SOUND

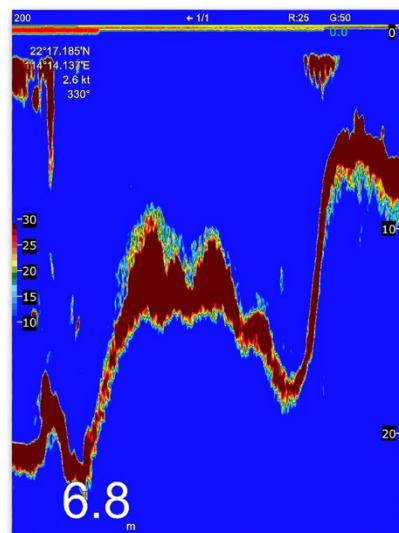


➤ BUILT-IN HD FISH FINDER TECHNOLOGY

*Transducer required

- Applies the most advanced Digital Fish Finder Technology
- Dual Frequency: 50 and 200kHz (alternately transmitted)
- Automatic Range and Gain adjustment depending on usage (Cruising or Fishing)

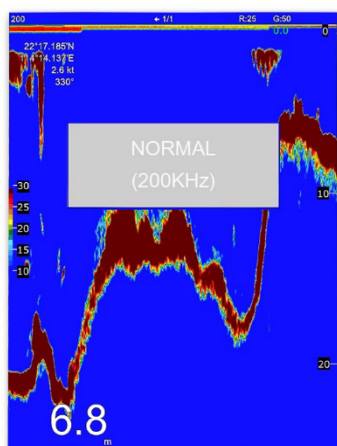
> Excellent Sea-bed Discrimination and easily identify fishes and school of fish
> Exact depth to where the school of fish is shown for ease of fishing



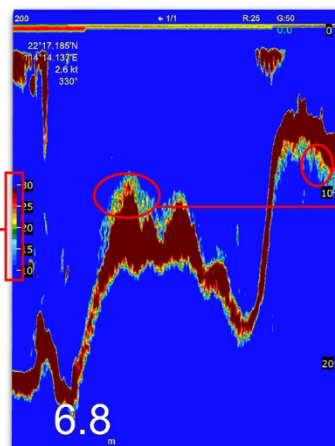
Display Modes

> 50 KHz and 200 KHz ONLY

16 Colors according to intensity



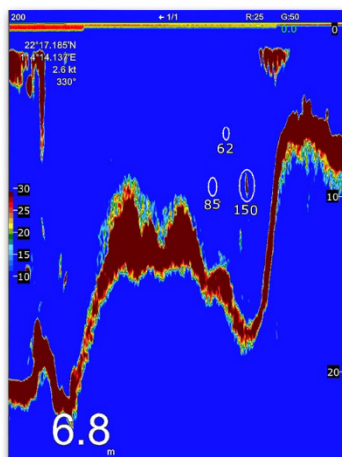
Color bar shows 16 colors



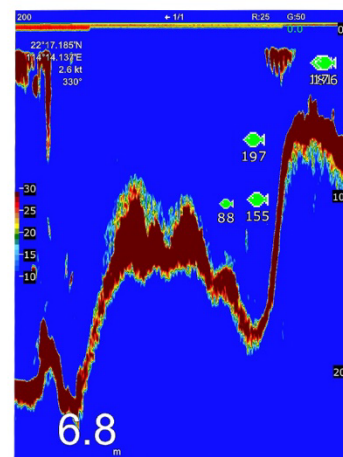
Can distinguish different strength of echoes by colors

Fish Marks

> Calculates and Displays the size of fish or school of fish automatically. Fish or School of fishes can be represented by circle or Fish Marks



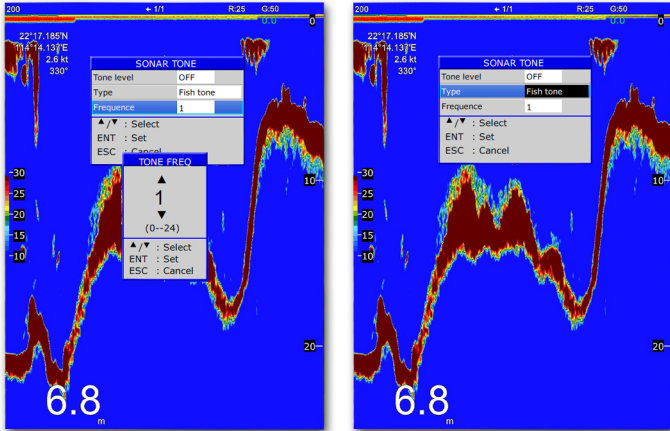
Fishes or school of fishes are represented by circles



Fishes or school of fishes are represented with Fish Mark

Sonar Sounds

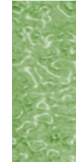
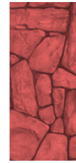
> Sounds when fish or object is seen beneath our boat



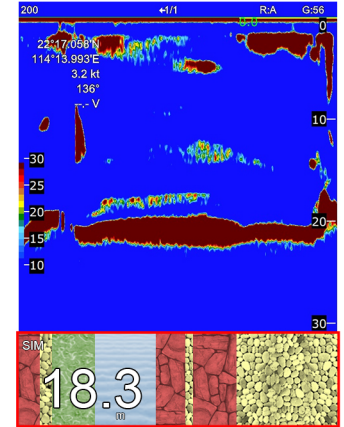
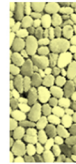
Seabed Hardness **(NEW FEATURE)**

> This feature shows the user what type of sea bottom it is under the boat
> The representation is much easier to assess from a user's point of view, through the presentation as below:

1) Rock 3) Mud



2) Gravel 4) Sand



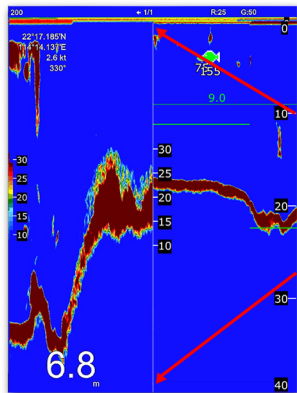
Seabed Hardness Feature

****NOTE:** The NMEA0183 seabed hardness output can be configured in hidden menu (*long press MENU key*)

> ONWA format > Hondex format
> Koden format

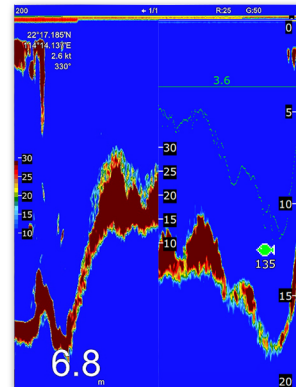
Zoom Modes

> Marker Zoom, Bottom Lock Zoom, & Bottom Zoom

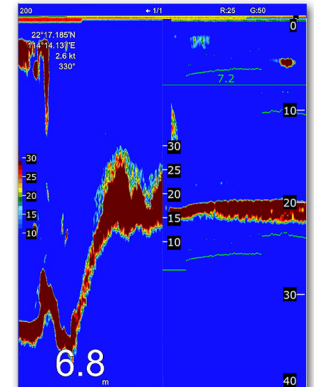


MARKER ZOOM

The marker area is zoomed and displayed on the left side screen



BOTTOM LOCK ZOOM



BOTTOM ZOOM

➤ FISH, BOTTOM, AND TEMPERATURE ALARMS

*Temperature sensor required for Temperature Alarm

Fish Alarm:

Alarms when fish is seen at set range

Bottom Alarm:

Alarms when the set bottom range is reached

Temperature Alarm:

Used to warn the user when temperature reaches set temperature range

OPTIONAL ACCESSORIES



TGM50-20B
TGM60-50B
1kW Transducer



TGM50-20A
TGM60-50A
2kW Transducer

GENERAL

Display	12.1-inch TFT LCD
Echo Color	16 colors (including background color) according to echo intensity. The background color is selectable from blue, light blue, white and black
Basic Range	Meters 5/10/20/40/80/150/300/600/1000/2000 Feet 15/30/60/120/200/400/1000/2000/3000/6000 Fathoms 3/5/10/20/40/80/150/300/600/1000 Passi/Braza 3/5/10/30/50/100/200/350/600/1000
Range Shift	Up to 1000 meters (3000 feet, 600 fathoms, 600 Passi/Braza) Times 2, 3, 4 and 6 ranges
Zoom Range	5/10/20 meters 10/20/40 feet 2/5/10 fathoms 2/5/10 Passi/Braza
Bottom Lock Expansion Range	Automatic adjustment of range and gain High Frequency (200kHz), Low Frequency (50kHz), Zoom (200k and 50K zoom) and A-Scope Display Marker Zoom, Bottom Zoom and Bottom-lock Expansion
Auto Mode	Lines/TX: Freeze, 1/8, 1/4, 1/2, 1/1, 2/1, 4/1
Display Mode	50kHz and 200kHz (Dual frequency)
Zoom Display	2kW, 2000W RMS
Display Advance Speed	
TX Frequency	
Power Output	

Pulse-Length/TX Rate

Display End Depth (m)	5	10	20	40	80	150	300	600	1000	2000
Pulse Length 200K (μs)	100	100	100	200	400	750	1000	1500	3000	5000
Pulse Length 50K (μs)	100	100	100	200	400	750	1000	1500	3000	5000
TX Rate (pulse/min)	750	750	750	375	188	107	50	30	20	10
TX period (millisecond)	80	80	80	160	320	560	1200	2000	3000	6000

Interference Rejecter	Rejects unwanted signals by comparing last and present echoes in strength
Alarm	Fish and Bottom alarms, Temperature alarm (sensor required)

TRANSDUCERS

1kW:
TGM60-50B-12L (50kHz, with 12 meters cable)
TGM50-200B-12L (200kHz, with 12 meters cable)
2kW:
TGM60-50A-15L (50kHz, with 15 meters cable)
TGM50-200A-15L (200kHz, with 15 meters cable)

POWER SUPPLY

12-24 VDC, 2.5A max at 12VDC

NMEA0183 SENTENCE SUPPORTED

INPUT:
RMA, RMC, GLL, GGA, VTG, ZDA, HEV

OUTPUT:
SDDBS, SDDBT, SDDPT,
POWAB /*only hardness output ONWA mode*/
SDSBH /*only hardness output ONWA mode*/
PHDX /*only hardness output HONDEX mode*/
PKODS /*only hardness output KODEN mode*/

NMEA2000 SENTENCE SUPPORTED

INPUT PGN:
126992, 129539, 129540, 129025, 129026,
129092, 129033

OUTPUT PGN:
129259, 128267

OTHER OPTIONS

HDMI, USB and Ethernet port
(Please specify when ordering)

ENVIRONMENTAL CONDITIONS

Ambient Temperature
Relative Humidity
Vibration

0°C to +50°C
85% at 40°C
± 1mm ±10%, 2(5) to 13.2 Hz,
Maximum Acceleration 7m/s²,
13.2 to 100 Hz
Display Unit (front panel): IPX7

Water proofing

EQUIPMENT LIST

Display unit
Quick manual
Transducer (Specify when ordering)
Mounting Brackets
Standard accessories pack

OPTIONAL ACCESSORIES

1 kW or 2kW Transducer (Specify when ordering)



TGM50-20B
TGM60-50B
1kW Transducer



TGM50-20A
TGM60-50A
2kW Transducer

DIMENSIONS (DISPLAY UNIT)

